

İSTANBUL'DA MODERN BİNALAR DOĞA VE YESİL BİR ARADA.

Eve hep çok keyifli, çok hevesli, kolayca döndüğünüz bir İstanbul. Bundan sonra en sevdiğiniz İstanbul burası.













TÜM DEĞERLER BİR ARADA

YÜRÜYÜŞ PARKURLARI

ÇOCUK PARKI

TENİS KORTU **YESİL ALANLAR**

PEYZAJ

-  5 Blok ve 30 bin m2 inşaat alanı
-  10 bin m2 peyzaj alanı
-  palmiye ağaçları, çalı grupları
-  peyzaja uygun ağaç türleri
-  Her daireye 1 adet kapalı OTOPARK
-  Ortak alanları besleyecek kapasitede jeneratör
-  Bahçe aydınlatmaları
-  Süs havuzu
-  KAMELYALAR
-  Bahçe sosyal donatı alanları





İSTANBUL DA OTO PARK SORUNUNA SON

Akıllı ev
sistemi

Plaka
tanıma
sistemli
otopark

Elektrikli
şarj
istasyonu









DOĞAYLA BİR YAŞAM ALANI












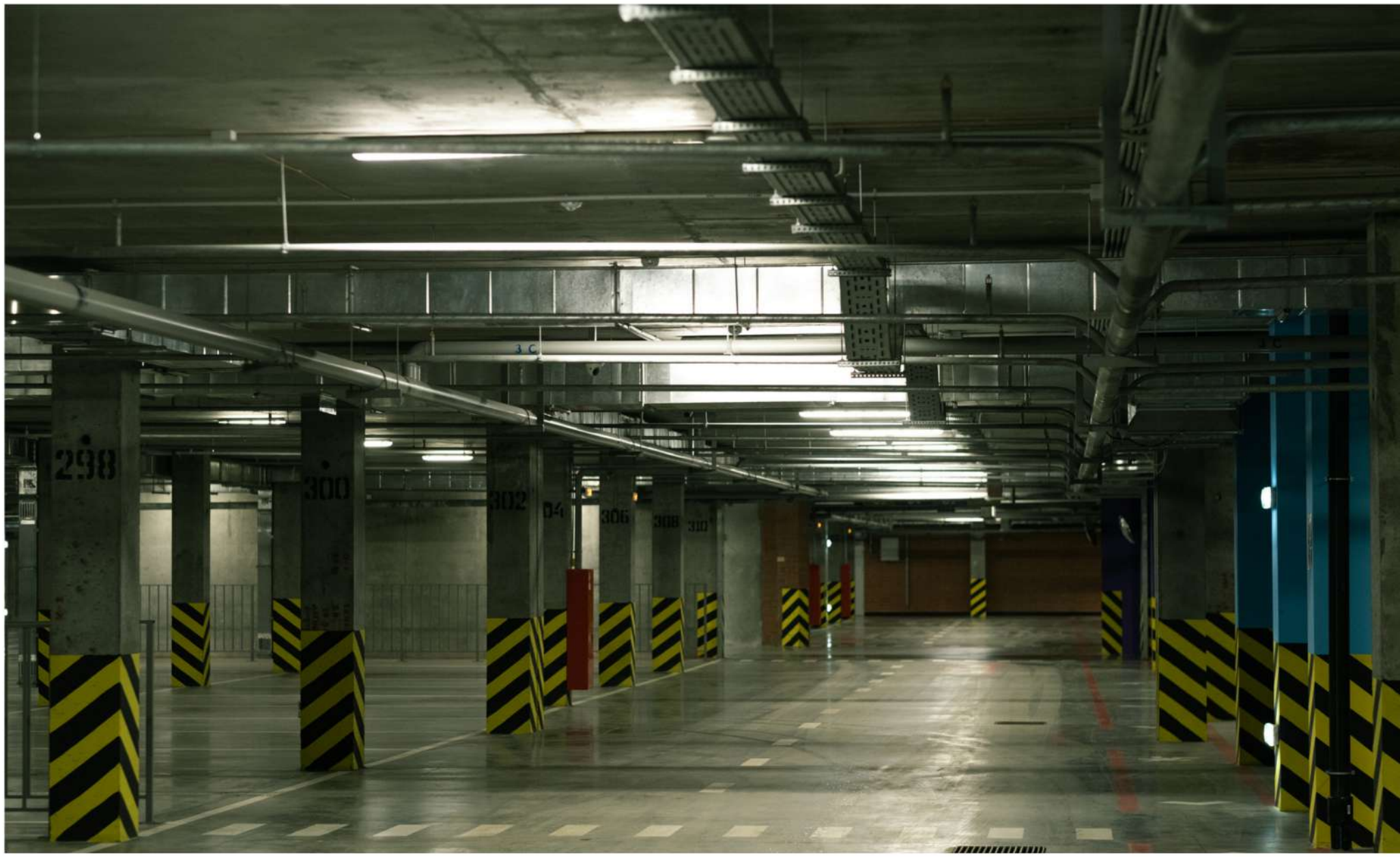








-  Güçlü yapısal tasarım
-  mühendislik ve mimarlıkta en son tasarım
-  çağdaş mimari
-  en iyi zemin mekaniği değerlendirilmesi
-  uluslararası standartlarda yapı uygulaması ve malzemeleri



- her daireye
1 adet kapalı
otopark
- şarj istasyonu



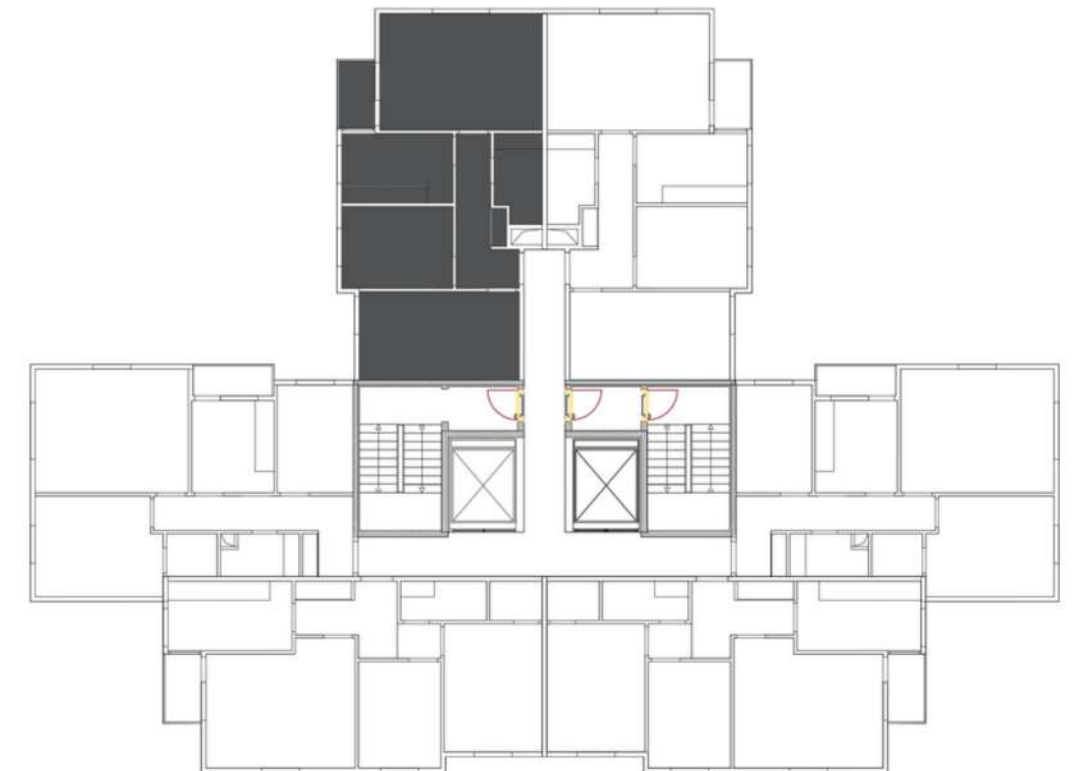
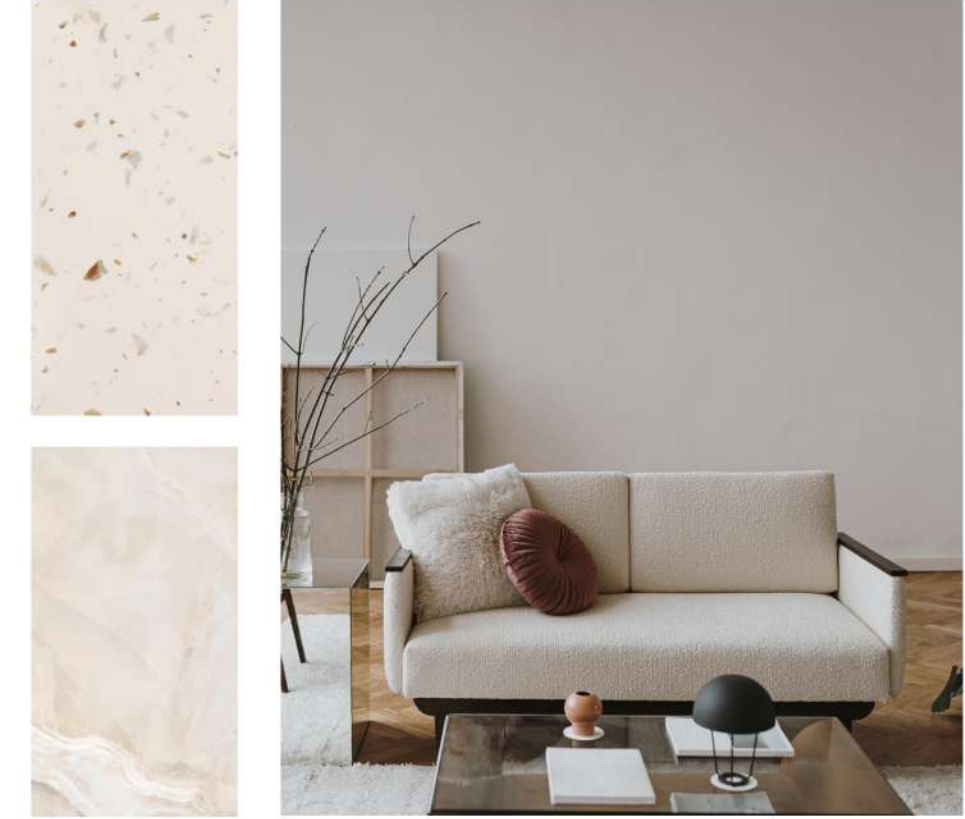
- Jeneratör
- Hidrofor
- Su deposu





Salon/ Living room	19.00 m ²
Mutfak/ kitchen	7.75 m ²
Yatak odası/ bedroom	9.15 m ²
Banyo/ bathroom	4.07 m ²
EB.Yatak odası/bedroom	14.30 m ²
Hol/hall	7.10 m ²
Balkon/ balcony	2.64 m ²

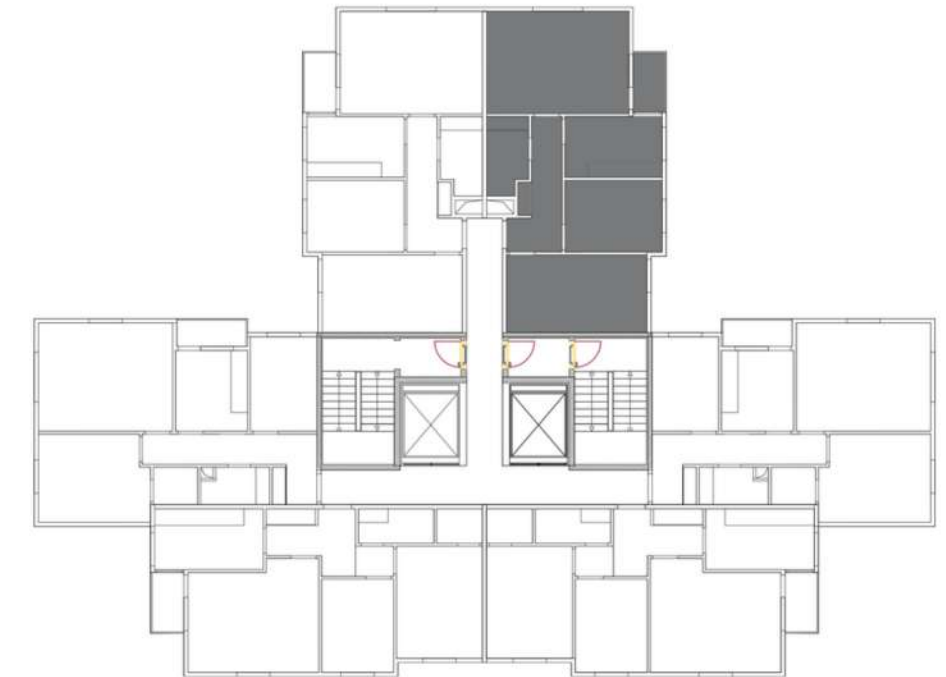
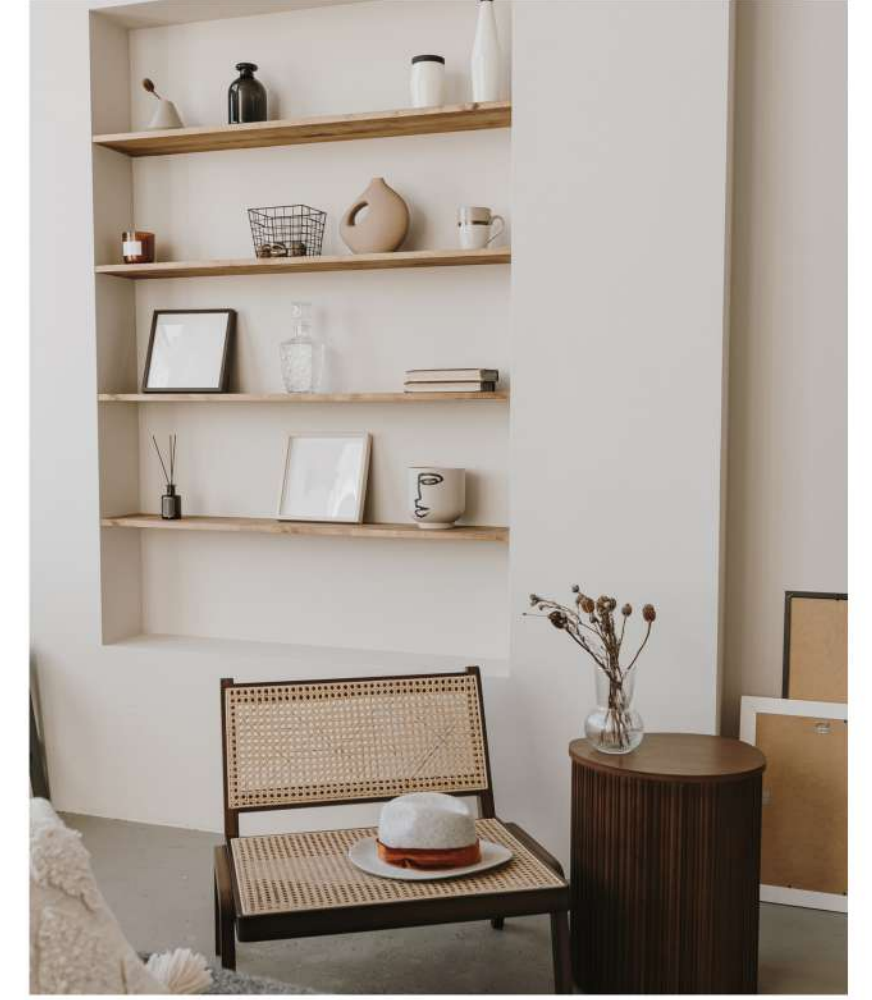
SÜPÜRÜLEBİLİR 64.00
ALAN m²





Salon/ Living room	19.00 m ²
Mutfak/ kitchen	7.75 m ²
Yatak odası/ bedroom	9.15 m ²
Banyo/ bathroom	4.07 m ²
EB.Yatak odası/bedroom	14.30 m ²
HOL/hall	7.10 m ²
Balkon/ balcony	2.64 m ²

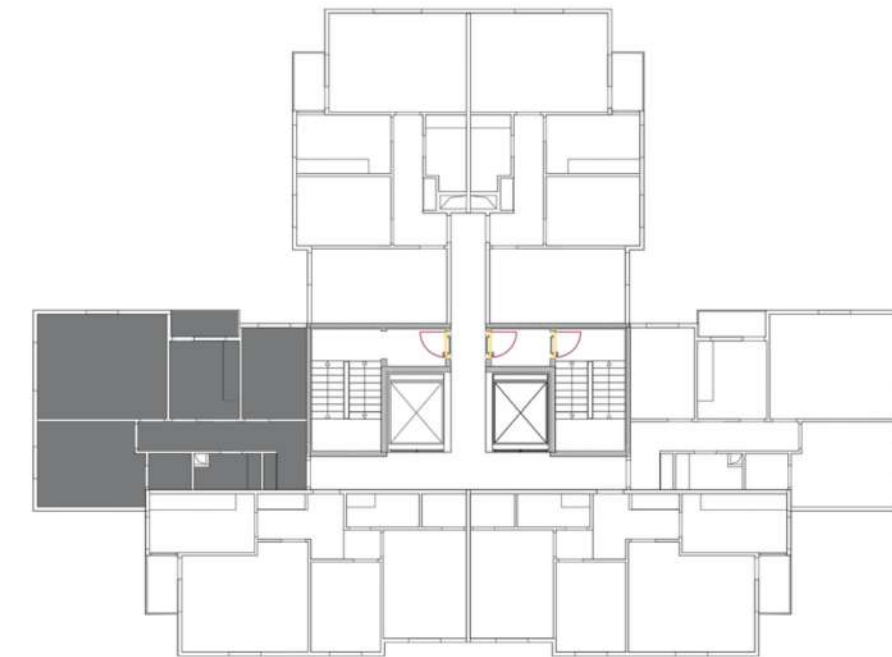
SÜPÜRÜLEBİLİR 64.00
ALAN m²

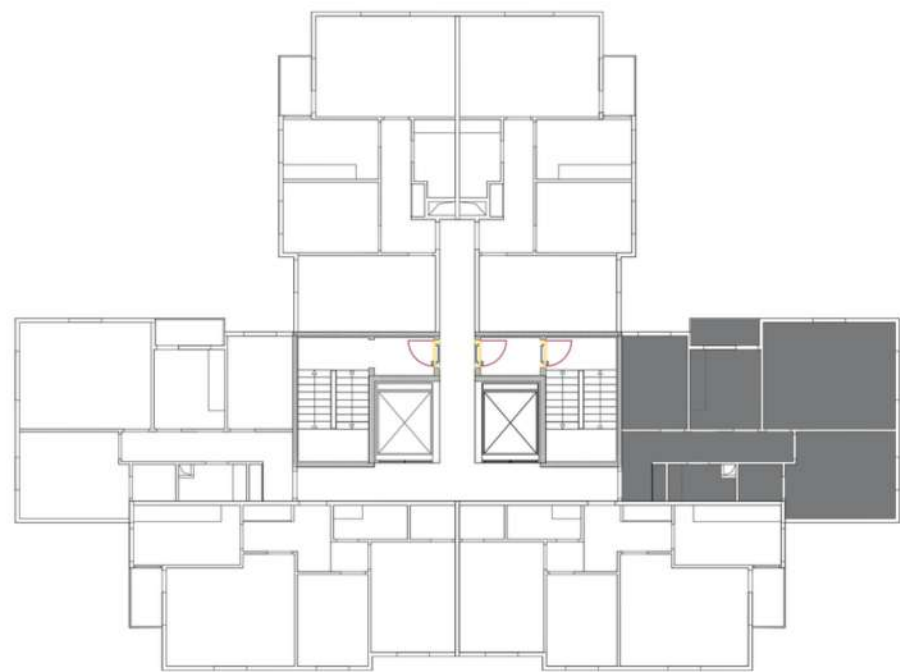




Salon/ Living room	19.00 m ²
Mutfak/ kitchen	7.55 m ²
Yatak odası/ bedroom	12.40 m ²
Banyo/ bathroom	3.36 m ²
Çocuk odası/ children's room	8.18 m ²
Antre	9.20 m ²
EB. Duş/ shower	2.17 m ²
Balkon/ balcony	2.55 m ²
SÜPÜRÜLEBİLİR	64.42 m²

ALAN

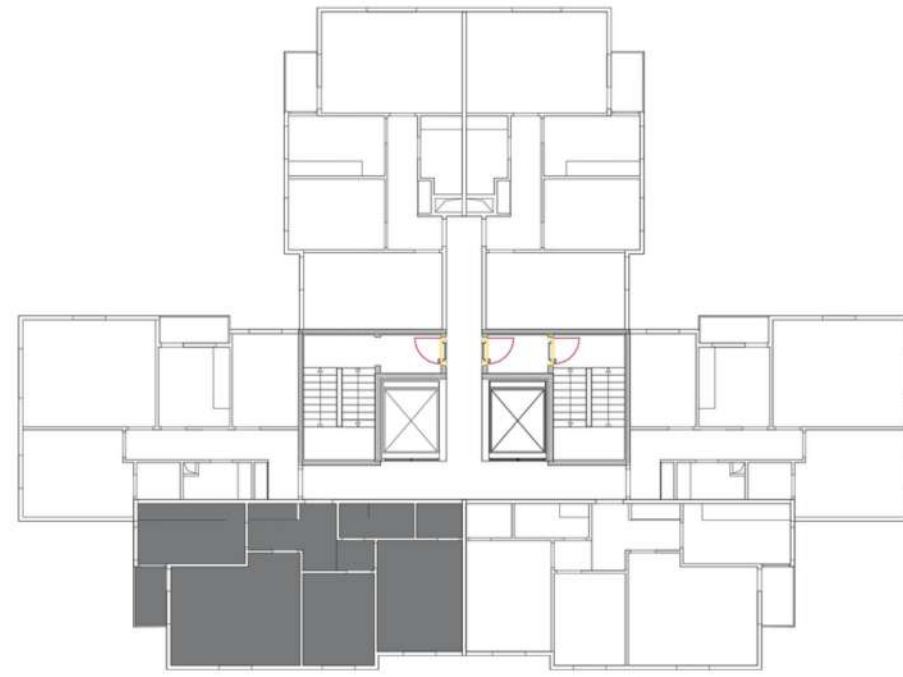




Salon/ Living room	19.00 m ²
Mutfak/ kitchen	7.56 m ²
Yatak odası/ bedroom	12.40 m ²
Banyo/ bathroom	3.36 m ²
Çocuk odası/ children's room	8.18 m ²
Antre	9.20 m ²
EB. Duş/ shower	2.17 m ²
Balkon/ balcony	2.55 m ²
SÜPÜRÜLEBİLİR ALAN	64,42 m²



Salon/ Living room	18.00 m2
Mutfak/ kitchen	8.63 m2
Yatak odası/ bedroom	12.60 m2
Banyo/ bathroom	3.40 m2
Çocuk odası/ children's room	8.75 m2
Antre	6.41 m2
EB. Duş/ shower	2.07 m2
Balkon/ balcony	2.64 m2
Hol/hall	1.50 m2
SÜPÜRÜLEBİLİR ALAN	64 m2





Salon/ Living room	18.00 m ²
Mutfak/ kitchen	8.63 m ²
Yatak odası/ bedroom	12.60 m ²
Banyo/ bathroom	3.40 m ²
Çocuk odası/ children's room	8.75 m ²
Antre	6.41 m ²
EB. Duş/ shower	2.07 m ²
Balkon/ balcony	2.64 m ²
Hol/hall	1.50 m ²

SÜPÜRÜLEBİLİR
ALAN 64 m²

